

COMMEMORATIVE HANDSTAMPS OF THE WASHINGTON, D. C. POST OFFICE Through 21 October 2001



Compiled by
C. A. Stillions
Washington, D. C.
20 February 2012

INTRODUCTION

In this listing post marks do not contain the word "Station" or an abbreviation thereof. Washington, DC postal markings that do contain the words "Station", "Substation", or "Branch" can be found under the listings for Stations: Military, Permanent, or Temporary. The date of 21 October 2001 was selected as a convenient end date because on this date the Washington, DC main post office, its processing and distributing center, closed due to anthrax contamination.

Unless noted, the illustrations are from the compiler's collection. Other illustrations have been contributed by the following:

This listing is by no means complete. The compiler would love to hear from anyone who has a postmark not in this listing. Please send a photocopy to C. A. Stillions, 1435 Fourth Street, S. W., No. B212, Washington, DC 20024-2227 or a scan to castillions@aol.com.

COMMEMORATIVE HANDSTAMPS OF THE WASHINGTON, DC POST OFFICE

ID No.	Date of Use	Subject	Other Known Dates of Use	Illustration	Notes
	1948 April 30	Navy Department Sesquicentennial			Also known as a machine slogan cancellation
	1955 October 20	Washington Jubilee (Philatelic) Exhibition -- Bureau Issues Association Day			
	21 January 1957	Presidential Inauguration Day (Dwight D. Eisenhower 2nd Inauguration)			
	1963 November 7				
	1974 December 19	U. S. Postal Service Bicentennial Art Contest			
	1981 January 20	Presidential Inauguration Day (Inauguration of Ronald Regan)			
	1982 October 25	National Stamp Collecting Month			

COMMEMORATIVE HANDSTAMPS OF THE WASHINGTON, DC POST OFFICE

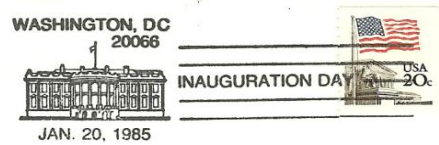
1983 April 19 American Revolution Bicentennial
 -- Cessation of Hostilities



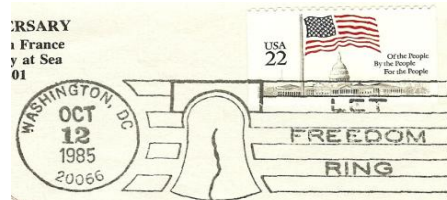
1983 October 8 National Stamp Collecting Month



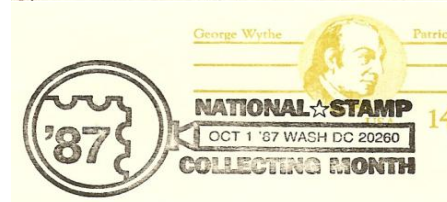
1985 January 20 Presidential Inauguration Day (Ronald Regan 2nd Inauguration) 1985Jan21



1985 October 12



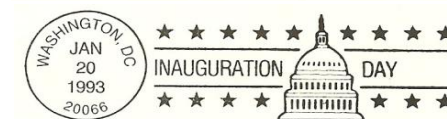
1987 October 1 National Stamp Collecting Month



1988 October 1 National Stamp Collecting Month



1989 January 20 Presidential Inauguration Day (Inauguration of George H. W. Bush and for first Inauguration of William Clinton) 1993Jan20

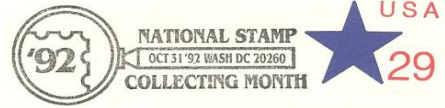


1990 November 10 Marine Corps Museum -- 45th Anniversary

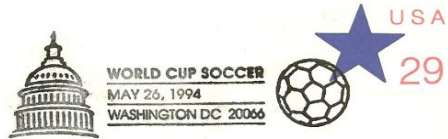


COMMEMORATIVE HANDSTAMPS OF THE WASHINGTON, DC POST OFFICE

1992 October 31 National Stamp Collecting Month



1994 May 26 World Cup Soccer Tournament



1995 June 1 Opening of Planet Hollywood Resturant

WASHINGTON, D.C. PLANET HOLLYWOOD WASHINGTON, DC 20066 • JUNE 1, 1995

E. ORDERS. PRICES DO NOT INCLUDE TAXES AND SHIPPING CHARGES.

\$9.00	PLANET K	\$6.00
\$15/\$16.00	SUNGLAS-	\$12.00
T \$18.00	SPORT WA	\$18.00
\$24/\$25.00	WATCHES	\$36.00
SHIRT \$36.00	PLUSH TC	\$16.00
\$12.00	CAMP SHI	\$45.00
\$28.00	FLEECE SWEATSHIRT	\$45.00

1997 January 20 Presidential Inauguration Day
(William Clinton 2nd Inauguration)



1998 May 4

