



# WASHINGTON CITY DESPATCH



---

NEWSLETTER OF THE WASHINGTON STAMP COLLECTORS CLUB  
VOLUME 3 NUMBER 3      WHOLE NUMBER 15      MAY - JUNE 2008

---

## From the Philippines to Postal Rates “P” Program Permits a Peek at Postal Past

The highlight of the meeting on March 5 was the “P” night Show and Tell. Members were to provide any philatelic item that involved the letter “P”.

Among the exhibits were a unique collection of trade and business cards relating to piano companies, many from the 19<sup>th</sup> Century, shown by LORRAINE BAILEY. JILL PIAZZA displayed several interesting panes of Vatican stamps.

DON PETERSON provided a look at a Philippine stamp without a “P.” This stamp, which shows Queen Isabela II in 1854, is scarce on cover. A study of the postal history of the imperforate issues of the Spanish Philippines, 1854 – 1877 tells us why. A Royal Order of January 12, 1853, authorized the issuance of the first Philippine postal stamps which were released on February 1, 1854.



The stamps, showing the effigy of Spain’s Queen Isabella II, were only applicable for interior use. Overseas rates did not become effective until January 1, 1856. Rumor has it that Queen Isabella II objected to her likeness printed on the stamp and would not allow it to be sent out of the country.

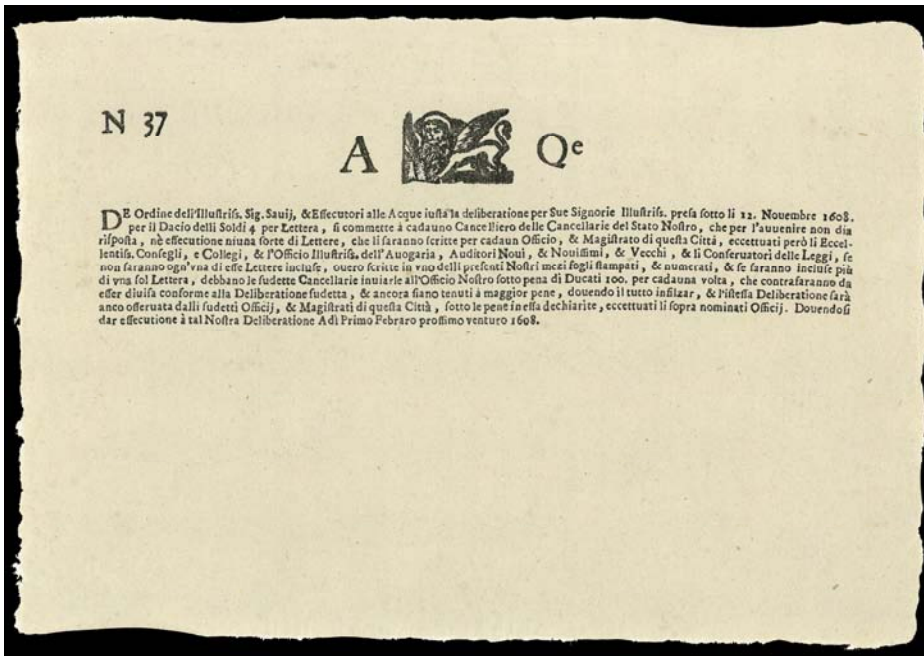
VIRGINIA RANDOLPH presented a philatelic album with a new twist: each page exhibits a paragraph and map location for the country and one single space for one stamp of the collector’s choice. This approach is particularly good to whet the appetite of the new collector. GERALDINE WHITLEY exhibited a U.P.U. stamp and a U.S. Preservation of the Environment stamp. PHIL UHLMANN prepared a detailed chart to show just how many postal rate changes we have had since the rate increased from 2 cents to 3 cents. This was in honor of the upcoming annual rate hike due on May 12<sup>th</sup>.

WASHINGTON CITY DESPATCH

May - June 2008

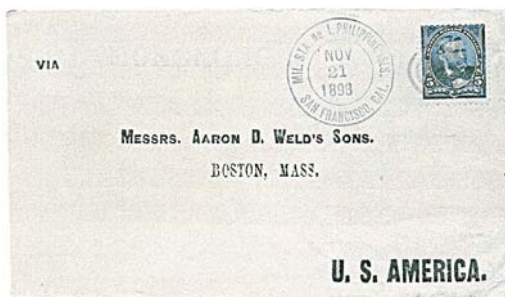
Page 2

DAN PIAZZA showed two examples of "A Q Lettersheets" which were used in Venice between 1608 and 1797. All communications with the Venetian government were required to be written on or enclosed in one of these sheets, which cost 4 soldi (Venetian soldi being roughly equivalent to English shillings). The proceeds were designated for flood relief. There are at least 9 major varieties of these sheets that were used, distinguished by differences in the image of the lion and the wording and typeface of the inscription at top. Postal stationery, semipostal, and revenue collectors all claim the A Q Lettersheets as their own. The ones Dan exhibited were from the mid-eighteenth century and had been used as wrappers, rather than having the message written directly on them.



This is a scan of a reproduction of a Venetian "AQ" Lettersheet which was created in 1959 by the Italian government printing works (IPZS) as the frontispiece for a book on Italian stamps. Each copy of the book, *I Francobolli dello Stato Italiano* (Stamps of the Italian State), has one of these reproductions pasted on a front flyleaf.

BILL SANDRIK provided two examples of 'P' related items. The first is an 1898 Spanish American War Military cover sent to the U.S. via Hong Kong. Franked with a 5c 1<sup>st</sup> Bureau issue of 1898 (Scott 281), and postmarked with blue double circle cancel: MIL. STA. No. 1 PHILIPPINE ISLS. / SAN FRANCISCO, CAL. / NOV 21 1898. This cancel was in use from October 1898 to March 1899. **It is unrecorded in blue!**



**WASHINGTON CITY DESPATCH**

May - June 2008

Page 3

BILL SANDRIK's second item demonstrated the use of a secret marking code used on privileged mail in the New York office of the U.S. censorship system



Mail from officials, consular mail, Red Cross, church dignitaries, etc. normally was not censored. When a censor came upon a piece of mail that met these criteria, he would mark the item on the reverse with an oblong bar in purple ink, and send it to a supervisor. If the supervisor agreed with the designation, the mail was sent on and not censored. If the supervisor disagreed, the item was returned to the censor for examination after he applied a mark consisting of a black or dark purple 6-8 mm wide "dot" over or near the oblong bar.



Here is a cover sent in 1944 from a Greek serviceman in Egypt, to Greek Archbishop Arsenios D. Saltas of the Greek Orthodox Church in New York City. Mailed from Field Post Office 291, the stamps are cancelled with Egyptian Pre-Paid marking Nr. 53 with Egyptian Censor markings alongside. It was sent via Base Army Post Office 4, also located in Egypt and carried by air from Cairo to New York, where it was censored again. On the

reverse are the Secret Censor Code markings mentioned above. The "70" marking is a Base Examiner's hand stamp used in Egypt.



C.A. STILLIONS provided a glimpse at a rare Newfoundland Proof which was produced in 1941 due to enemy action during WWII. In May 1941 German air raids destroyed the printing plant of Sprague's Perkins Bacon subsidiary. Waterlow & Sons took over the printing of Newfoundland stamps. This particular proof was a large trial color die proof of Perkins Bacon die number 1028 on the same paper as the other proofs in this issue proofed by Waterlow. Why this die was proofed by Waterlow and Sprague's 1938 die, die no. 1237, was not, is not known. No die proof of Sprague die No. 1237 was found in the Waterlow archives. Since there is no known Waterlow die proof for the 7 cents Queen Mary, it is likely that the Sprague transfer roll was used to create the Waterlow printing plate.

## PRESIDENT'S MESSAGE

By C.A. Stillions

As most of you know our meeting location is within a few blocks of the new Nationals baseball stadium. What you may not know is that we are within the Nationals parking zone. Meaning, on game nights on-street parking is restricted to residents and guests with parking stickers on their cars. At on-street metered parking spaces, which occur immediately next to our meeting place, rates become very high. So far, observations have not revealed a shortage of parking spaces near our meeting place during Nat's games. Either the National's poor start or the high use of Metro by the National's fans is keeping the demand for parking during Nat's games down. There will be another test on 21 May as the Nationals play Philadelphia and on 4 June when St. Louis comes to town. If you are driving to our meetings on those nights or not, please let your club officers know of your experience. That information is vital for your officers to plan mitigation strategies. Also, if you are coming by Metro, you may want to consider traveling to the Federal Center, SW or the L'Enfant Plaza Metro Stations and walking the few extra blocks to the meeting.

On Saturday, 17 May, there will be a special meeting. WSCC member, Dan Piazza, will lead a tour of the Miller Collection, currently on display at the National Postal Museum, additional collections not on display, and the NPM Library. Should be a wonderful Saturday!

Also the areas biggest annual stamp show will be held June 6 thru 8 at the McLean Hilton Hotel in Tyson's Corner. Do plan to attend. It will be a wonderful event.

## WSCC MEETING PROGRAMS

May and June 2008

**7 May**            **Hungerford Album Competition.** Members are to present an album of philatelic items and are asked to describe it to those in attendance. Members present vote for the BEST album. The winner receives a \$25.00 cash prize.

**21 May**            **Swap and Trade** (Baseball parking restrictions in effect)

**4 June**            **Show & Tell "K" Night** Members are to bring a philatelic item that begins with the letter "K". (Baseball parking restrictions in effect)

**18 June**            **Member Auction**

## COMING PHILATELIC EVENTS

Upcoming area and regional club sponsored stamp shows and other philatelic events

**June 6-8**            **NAPEX, National Philatelic Exhibitions of Washington, D. C.,** McLean Hilton at Tyson's Corner, 7928 Jones Branch Drive, McLean, Virginia. Contact Thomas Lera, frontier2@erols.com; www.napex.org: 703-205-0600.

**August 9-10**            **Vienna Quarterly Coin and Stamp Show,** Vienna Community Center, Vienna, VA    Saturday 10 a.m. – 6 p.m. Sunday 10 a.m. – 5 p.m.

**August 22-24**            **AMERICOVER, American First Day Cover Society,** Fairview Park Marriott, 3111 Fairview Park Drive, Falls Church, Virginia. Contact Doug Kelsey, americoverexpo@aol.com; www.afdcs.org.

**August 29-31**      **BALPEX, Baltimore Philatelic Society**, Marriott's Hunt Valley Inn, 245 Shawan Road, I-83 Exit 20E. Contact Robert E. Gibson, Sr., balpex@aol.com, 410-332-4741.

**September 26-27**      **The Postal History Symposium**, National Postal History Museum, 2 Massachusetts Avenue, N. E., Washington, DC. Contact Allison Marsh, marsha@si.edu.

## NATIONAL POSTAL MUSEUM PROMOTES WSCC MEMBERS

By Don Peterson

As the National Postal Museum continues to grow – adding new exhibits, research projects and online collections – two members of the museum's staff who are also members of the WSCC will contribute to the expansion in their new positions. In recent weeks, **Cheryl R. Ganz** was promoted to Chief Curator of Philately. This is a dream job for her. She specializes in international zeppelin mail, especially the 1933 *Graf Zeppelin* Chicago flight and mail from the *Hindenburg*. She has exhibited worldwide, including in the Court of Honor at the Washington 2006 World Philatelic Exhibition. Ganz earned a Ph.D. in history from the University of Illinois at Chicago. Her latest book is due out in September on "The 1933 Chicago World's Fair: *A Century of Progress*." **Daniel Piazza** was promoted to Assistant Curator of Philately. He is widely published and is a member of both the WSCC and the Baltimore Philatelic Society. He also sits on the board of governors of the Vatican Philatelic Society. The WSCC is privileged to have both of these experts as members of the club and adds its congratulations to both!

## WSCC Members Active at SPRINGPEX 2008

By Don Peterson

It was really nice to see a large number of WSCC members at SPRINGPEX 2008, at Springfield, Virginia, on June 29-30, 2008. A casual glance revealed buying and "horse trading" by **Bill and Janet Hughes, Don Peterson, John Hardies, Virginia Randolph, Tadas Osmolskis, George Brown, Joe Geraci, Bruce Kellogg, Dan Piazza, Virginia Randolph, Bill Sandrik, C.A. Stillions, Matt Cassetta, Herb Trenchard, Gerhard Wolff**, and others. Two members exhibited: **Don Peterson** won a Vermeil Award and the American Association of Philatelic Exhibitors Award of Honor for his "Postal History of the Imperforate Issues of the Spanish Philippines, 1854-1874"; and **Doug Lehmann** won a Silver Award for his "World War II Ration Books". **Cheryl Ganz**, Chief Curator of Philately at the National Postal Museum and WSCC member, was the guest speaker at the awards ceremony at the Springfield Hilton on Sunday, March 30.

## ACCOUNTS OF MEETINGS

By Martin Fleischer, Recording Secretary

**5 March 2008** President **C.A. Stillions** presiding, 16 members and 1 guest present. President STILLIONS announced that all members of the WSCC are invited to the National Postal Museum on May 17, 2008. Club member **Dan Piazza** will conduct a tour of the Miller Collection, Part II and the museum's library facilities. The event is scheduled for 10 a.m. until noon. MILTON HOLMES called attention to possible logistical problems on the nights when we meet on Nationals baseball team game nights. Details will appear in the forthcoming newsletters.

After the business was concluded, members participated in

a "Show and Tell Night" program, exhibiting philatelic items that involve the letter "P."

**19 March 2008** President **C.A. Stillions** presiding, 15 members and 2 guests present. Club members participated in Swap and Trade night.

**2 April 2008** President **C.A. Stillions** presiding, 18 members present. **Don Peterson** gave a synopsis of activities at the March SPRINGPEX show. Then members sharpened their pencils and wits on the latest Professor Phil's Phils-a-telic Quiz. Results follow.

**16 April 2008** President **C. A. Stillions** presiding, 20 members and 3 guests present. The evening's highlight was a donation auction. TADAS OSMOLSKIS conducted the auction. There were huge cartons of stamps to be had for bargain prices. Also available were U.P.U. books from various countries. One lot of three Middle East U.P.U. books brought \$40. An album of North Viet Nam/Peoples

Republic of Viet Nam went for \$25. Happy bidders got stock sheets of "Farley's Follies", U.S. low value Columbians, unique European and American stampless letters and numerous commemorative books from various countries. There was a box of "country label" rubber stamps for only \$6. Total realized for the club was \$392.00.

## I'M OK, YOU'RE OK, SO WHAT'S OKAY, OK?

By Phil Uhlmann

At the 2 April meeting, those in attendance experienced the 3<sup>rd</sup> in the series of Professor Phil's Phils-a-telic Quiz. Nothing could have properly prepared us for this grueling set of questions. Many did not even want to reveal their score, so Professor Phil analyzed the quiz and provided the following recap.

Of the 15 quiz-takers, **Tadas Osmolskis** took top honors, accumulating a whopping 28 out of a possible 29 points. His only error was missing question 3: "Which 3 of the following historic personages have post offices using both their first and second names?" The correct answer was "Gene Autry", "Jim Thorpe", and "Kit Carson". He checked "Daniel Boone" instead. A good choice, since many others liked Daniel as well. Apparently, the most difficult question for the group was the first one: "Who is Virginia P. Hensley the entertainer on Scott #2772?" She wasn't Ethel Merman or Clara Bow. She was Virginia's own Patsy Cline. An equally difficult question regarded rainwater falling in New York State and ending up in the Gulf of Mexico. This happens by way of the Allegheny River. Both of these questions stumped 9 of the 15 test takers. Overall, the average number of points garnered by the group was 19 out of 29, a percentage of 66.5%.

So what about Okay, OK? The person who came closest to guessing the actual zip code of Okay, OK, either above or below, won a special prize of \$2.00. Professor Phil provided the first digit, a '7'. After a lot of calculations, **Don Peterson** was declared the winner. By the way, the zip code of Okay, OK is '74446'.  
**Way to go, Tadas and Don!!**

## CLASSIFIEDS

Members may place classified ads in the newsletter for free on a space available basis. The submission date for ads is the same as for other submissions, the last meeting of even numbered months. Send your copy to the Editor, Bill and Janet Hughes at the address in the panel on the last page. Hand written or typed, mailed or hand delivered, faxed or emailed, any way is acceptable, but email is preferred.

### STAMPS FOR SALE

37 + 39 cents Hi-Ends	\$17.00 a pound
34 cents and under Low-Ends	\$ 9.00 a pound
Christmas	\$ 1.00 a pound
Bulk Stamps	\$ 1.00 a pound
Appraised value 38 cents and over	5 or 10 cents a piece
Plate # stamps	5 cents a piece
Foreign Stamps	\$15.00 a pound

Order from Stamps for a Living Business, FO18/JHP/OT Dept., 2700 M L King Avenue, S. E., Washington, DC 20032-2601.

(Classifieds continued on Page 8)

## NPM Special Offerings for WSCC

WSCC member **Dan Piazza**, Assistant Curator of Philately at the National Postal Museum, has provided several special offerings for WSCC members in May. On Saturday, May 17, he will lead a tour of the Miller Collection, currently on display at the museum, additional collections not on display, and the NPM Library. Members are to meet at the National Postal Museum at 10:00 for the 2 hour program. In addition, Dan has graciously provided a special Cinderella and NPM cancellation for our current newsletter. That will make this a very special issue and collectible cover. Finally, in anticipation of the upcoming tour, Dan has provided some photos of NPM under construction. Thanks go to **Dan** from all of the WSCC.



An aerial view of restoration work on the Postal Square Building in the early 1990s. There is no roof on the building; the large hole in the center marks the museum's atrium, where the large skylight is now.



Workers hoist a de Havilland DH-4B airmail plane into place above the National Postal Museum's atrium. DH-4Bs, designed for high-altitude military observation in WWI, were extensively retrofitted and used in the airmail service after the war.



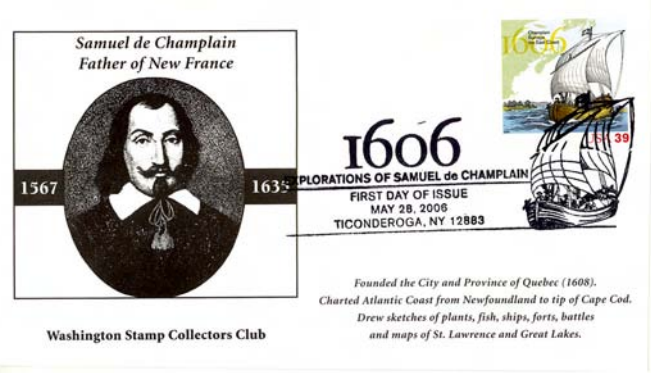
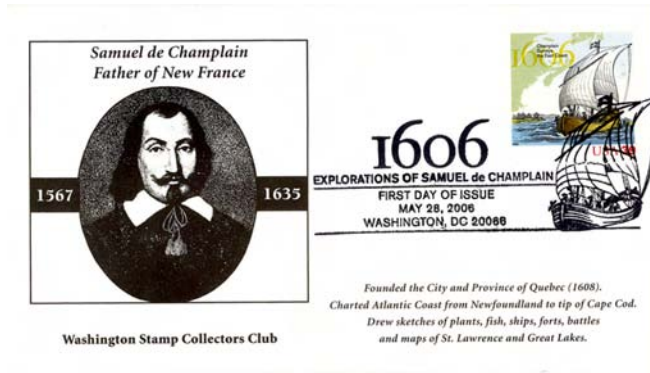
Smithsonian fabricators create the replica Railway Post Office sorting car on the NPM's exhibit floor. Although the car's interior furnishings are original, the museum's floor could not support the weight of the actual rolling stock. A lighter-weight copy had to be specially constructed.



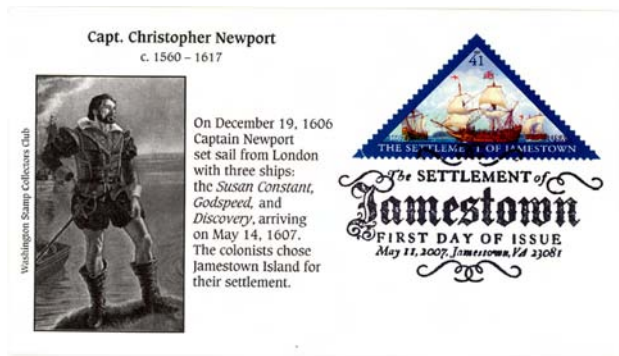
Visitors stand in line on opening day, July 30, 1993, to receive first day cancellations on the set of four stamps issued to publicize the museum.

More Classifieds

LORRAINE BAILEY posts the following covers for sale. Please see her at the meetings for more details.



Each of the above covers features one stamp with the price of \$3.00 each.



One stamp covers are \$3.00.

Two stamp cover is \$6.00.

WASHINGTON, DC MACHINE SLOGAN CANCELLATIONS

By C. A. Stillions

For several years now I have been tabulating the machine slogan cancellations used by the Washington, DC Post Office. The last listing was published in July 2007 and can be found on the Washington Stamp Collectors Club's web site, [www.dcstampclub.org](http://www.dcstampclub.org). Shortly, I hope to issue another list with more accurate earliest and latest dates of use. Out of the almost 240 different slogans, however there are twenty that I have only recorded one strike and can be found in the accompanying table. They were all used in the last half of the Twentieth Century and thus should not be rare, but I know of only one strike. Therefore, I would appreciate it if club members would look through their holdings and report any strikes that they might have. Please send a photocopy of the cancellation to C. A. Stillions, 1435 Fourth Street, S. W., Unit B212, Washington, DC 20024-2227 or email a scan to [castillions@hotmail.com](mailto:castillions@hotmail.com).




WASHINGTON CITY DESPATCH

May - June 2008

Page 9

WASHINGTON, DC MACHINE SLOGAN CANCELLATIONS  
SINGLE REPORT OF USE  
15 APRIL 2008

ID NO	DESCRIPTION	REPORTED DATE			ILLUSTRATION
		YEAR	MONTH	DAY	
55	THE CONGRESSIONAL CLUB / GOLDEN ANNIVERSARY / 1908 - 1958	1958	May	22	THE CONGRESSIONAL CLUB GOLDEN ANNIVERSARY 1908-1958
97	150TH ANNIVERSARY / ON-CAMPUS TRAINING / ARMY R. O. T. C.	1970	April	13	150 <sup>TH</sup> ANNIVERSARY ON CAMPUS TRAINING ARMY R.O.T.C.
203	SUPPORT / INFECTION CONTROL / WEEK	1987	October	29	SUPPORT INFECTION CONTROL WEEK
210	SUPPORT / AMERICAN / EDUCATION WEEK	1986	November	19	SUPPORT AMERICAN EDUCATION WEEK
211	UNITY OF KNOWLEDGE / SMITHSONIAN INSTITUTION / CELEBRATION	1965	August	24	UNITY OF KNOWLEDGE SMITHSONIAN INSTITUTION CELEBRATION
212	U. S. ARMY R O T C / 75TH ANNIVERSARY / 1916 - 1991	1991	October	18	U.S. ARMY ROTC 75 <sup>TH</sup> ANNIVERSARY 1916 - 1991
220	U. S. CUSTOMS SERVICE / PROTECTING THE PUBLIC / SINCE 1789	1973	August	16	U. S. CUSTOMS SERVICE PROTECTING THE PUBLIC SINCE 1789
222	XII INTL. CONGRESS / DERMATOLOGY / WASH., D. C. - SEPT. '62	1962	September	10	XII INTL. CONGRESS DERMATOLOGY WASH. D.C.-SEPT.'62
223	Journey / to a / New / Frontier... (Starship Enterprize TM @PPC) / Collect Stamps	1991	November	30	Journey to a New Frontier...  TM @PPC Collect Stamps
224	HUMAN RIGHTS DAY / BILL OF RIGHTS DAY / Dec. 10 - 15	1980	December	15	HUMAN RIGHTS DAY BILL OF RIGHTS DAY DEC. 10 - 15
225	JOBS FOR VETERANS	1971	August	19	JOBS FOR VETERANS
226	NATIONAL / CONSUMERS WEEK / APRIL 20 - 26, 1986	1986	April	21	NATIONAL CONSUMERS WEEK APRIL 20-26 1986

**WASHINGTON CITY DESPATCH**

May - June 2008

Page 10

**WASHINGTON, DC MACHINE SLOGAN CANCELLATIONS  
SINGLE REPORT OF USE  
15 APRIL 2008**

227	NATIONAL DRUNK / AND DRUGGED DRIVING / PREVENTION MONTH / DECEMBER, 1994	1994	December	2	
228	NORTH ATLANTIC / TREATY ASSOCIATION / 30TH ANNIVERSARY		Date not readable		
229	STEAM ALONG / WITH STAMP / COLLECTING -- (caboose) / ALL ABOARD!	1987	October	16	
230	WORKING FOR AMERICA / MAY 8 - 14, 1988 / SMALL BUSINESS WEEK	1988	May	8	
231	YEAR OF THE OCEAN / WAVE OF THE FUTURE / 1984 - 1985	1984	September	13	
232	FAIR HOUSING / BUILDING A NATION / OF NEIGHBORS 1968 -1888	1988	September	22	
233	GUARD AND RESERVE / EMPLOYER RECOGNITION / MONTH -- JUNE 1975	1975	June	23	
234	HELP THE SOCIETY OF / ST. VINCENT DE PAUL / HELP THE NEEDY	1977	May	24	
235	CENTENNIAL / BUREAU OF LABOR / STATISTICS	1984	August	16	

**WASHINGTON STAMP COLLECTORS CLUB**

web site: [www.dcstampclub.org](http://www.dcstampclub.org)

**President:** C. A. Stillions, 1435 Fourth Street, S. W., No. B212, Washington, DC 20024-2227, email: [castillions@hotmail.com](mailto:castillions@hotmail.com), FON/FAX: 202-484-6425

**Vice President:** Don Peterson, [dpeterson4526@comcast.net](mailto:dpeterson4526@comcast.net)

**Executive Secretary:** Gerard Marandino, 5105 Skyline Village Court, Alexandria, VA 22302, email: [gmarandino@alum.mit.edu](mailto:gmarandino@alum.mit.edu)

**Recording Secretary:** Martin Fleischer

**Treasurer:** Joel Fassler, P. O. Box 1211, Silver Spring, MD 20910, email: [senttome@erols.com](mailto:senttome@erols.com)

**Newsletter Editor:** William and Janet Hughes, 2205 Russell Road, Alexandria, VA 22301, email: [jmhughes02@yahoo.com](mailto:jmhughes02@yahoo.com), FON: 703-549-3860

**Webmaster:** Daniel Piazza, email: [dpiazza3@verizon.net](mailto:dpiazza3@verizon.net), FON: 202-633-4737

**FDC Manager:** Lorraine Bailey, email: [Alsaceleb@aol.com](mailto:Alsaceleb@aol.com)

**Circuits Manager:** Virginia Randolph

**Historian:** Herb Trenchard, email: [trenchardh@si.edu](mailto:trenchardh@si.edu)

Membership information may be obtained from the Executive Secretary. Dues are due June 30th and are \$16.00 a year for resident members, \$8.00 a year for non-resident members, and \$8.00 a year for junior members.

Meeting are held the First and Third Wednesdays of the month at Christ United Methodist Church, 900 Fourth Street, S. W., Washington, DC starting at 7:00 PM. (Enter Church Education wing from I Street, S.W.)